

Parkheath

Sold on Service

King Henrys Road NW3
£2,253 PCM (£520 per week) - Camden Band E

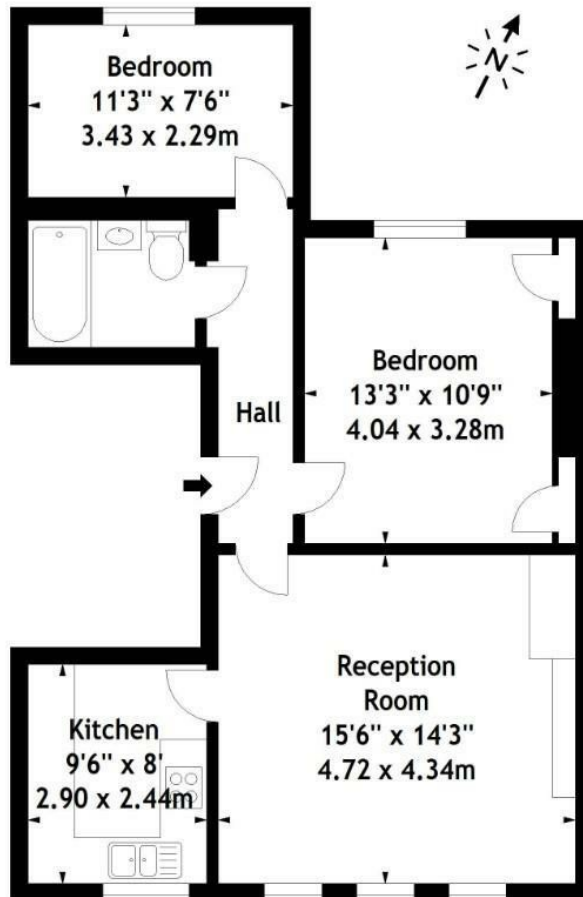


Bright & airy 2 bedroom apartment
Reception with feature fireplace
Master bedroom with fitted wardrobes
Moments to Primrose Hill Village

1st floor in charming period house
Modern kitchen with all appliances
Luxurious bathroom
Close to Chalk Farm tube

Belsize Park Office 020 7431 3104

King Henrys Road, NW3
Approx. Gross Internal Area
658 Sq Ft - 61.13 Sq M



First Floor

Measured in accordance with RICS guidelines. Every attempt is made to ensure accuracy, however all measurements are approximate. This floor plan is for illustrative purposes only and is not to scale.
© Datography Ltd 2013
Photographs * Floorplans * Virtual Tours
Tel: 0845 643 4401 www.datography.com

The particulars do not constitute part of an offer or contract. The particulars, including text, photographs and plans, are for the guidance only of prospective purchasers/tenants and must not be relied upon as statements of fact. The descriptions provided therein represent the opinion of the author and whilst given in good faith should not be construed as statements of fact. Nothing in these particulars shall be deemed a statement that the property is in good condition or otherwise or that any services or facilities are in good working order. All measurements are approximate